

CMLMS
P.O. Box 24202
Lansing, Michigan 48909

**TIME VALUE
FIRST CLASS**

Rockhound News— March 2021

Official publication of the
Central Michigan Lapidary and Mineral Society
Affiliated with MWF and AFMS



Rockhound News

This bulletin is the official publication of the Central Michigan Lapidary and Mineral Society of greater Lansing, Michigan. It is published each month except July and August.

The Central Michigan Lapidary and Mineral Society is a non-profit organization, meeting to promote interest and increased knowledge in the fields of mineralogy, geology, paleontology and the lapidary arts. It was organized in May 1957 and celebrated its 50th Anniversary in 2007.

Meeting place: Masonic Center, 2175 Hamilton Street, Okemos, MI

Regular meeting date: Third Thursday, except July and August

Meeting time: 7:00 p.m., doors are open at 6:30 p.m.

Annual Dues: Adults \$10.00; Families \$15.00; Students under 18 \$2.00

Board meetings: First Thursday, except July and August; 7:00 p.m., Okemos Library

OFFICERS 2021

| | | |
|-------------------------|---------------------------------|---|
| President | Nate Krupp | 517-626-1136 nathan.krupp1@gmail.com |
| Vice-President | Steve Smith | 517-896-6048 radssmith@radssmith.com |
| Recording Secretary | Jake Chybowski | jcchybow@gmail.com |
| Corresponding Secretary | Theresa Hubbard | 517-203-9620 thrshubbard@yahoo.com |
| Treasurer | Elaine Beane | 517-272-9661 gebeane@comcast.net |
| 1 Year Director | Jessica Clark | 517-242-0554 clark.jess.leigh@gmail.com |
| 2 Year Director | Lyle Laylin | 517-488-7908 lyle18@gmail.com |
| 3 Year Director | Sally Hedin | 517-281-0575 sallyhedin@yahoo.com |
| Acting Roster Secretary | Elaine Beane (<i>pro tem</i>) | 517-272-9661 gebeane@comcast.net |
| Liaison Officer | VACANT | |
| Past President | Sue Casler | 517-582-2466 casler5copper@gmail.com |

COMMITTEE CHAIRS 2021

| | | |
|------------------------|-------------------|---|
| Membership | Robin J. Smith | 517-290-4891 rsmith@radssmith.com |
| Field Trips | Carl Mennare | 517-599-1882 cmenn@yahoo.com |
| Publications | Chuck Taricska | 517-331-1737 chuck_taricska@yahoo.com |
| Display | VACANT | |
| Education and Outreach | Theresa Hubbard | 517-203-9620 thrshubbard@yahoo.com |
| Library | Jessica Clark | 517-242-0554 clark.jess.leigh@gmail.com |
| Finance | Milt Gere | 517-669-8116 miltgere@aol.com |
| Show | Robin J. Smith | 517-290-4891 rsmith@radssmith.com |
| Show Co-Chair | Ernie Aughenbaugh | 989-224-7619 esaslapidary@gmail.com |
| Web Master | Lyle Laylin | 517-485-7908 lyle18@gmail.com |

Permanent Mailing Address

CMLMS

P.O. Box 24202

Lansing, Michigan 48909

Club Website: <http://www.michrocks.org>

Affiliated With

Midwest Federation of Mineralogical and Geological Societies, <http://www.amfed.org/mwff/>

ROCKHOUND NEWS

NEXT MEETING: In person meetings cancelled!!

The CMLMS Board has voted to cancel membership meetings through March. We feel this is the best option in order to maintain the health of our club. The board will keep the club updated of any changes. Stay safe and healthy.

No meeting this month, but Carl, our Field Trip Coordinator has come up with a great rockhounding trip for Saturday April 10. I have posted the flyer below.

Calendar for Spring 2021

April 10, Field trip to Nether's Farm, Hopewell Ohio

[Editor's note: Please send any news or stories for the Newsletter to chuck_taricska@yahoo.com.]

Virtual Meeting available this month:

Night Sky Chats: Everything Meteorites

MSU Abrams Planetarium lecture series.

When: Available to watch anytime (previously recorded)

Presentation: Craig Whitford chats about the different types of meteors and the new meteorite exhibit going up soon at Abrams Planetarium.

Presenter: Craig Whitford gives presentation all about meteorites!

Website: <https://www.facebook.com/AbramsPlanetarium/videos/4352438538117619>

Attention Rock Hounds

Rockhounding Field Trip has been scheduled

For The Nether's Farm

Current Fee is \$7.50 a person, then 50 cents a pound.

April 10, 2021 @ 10:00am-3:00pm



On the hunt for chalcedony, chert, quartz and any rocks that strike our fancy.



Address is 3680 Flint Ridge Rd., Hopewell, OH 43746

(this is a 4 -1/2 hour drive from Lansing)

Newark, OH (closest large city) has hotels available

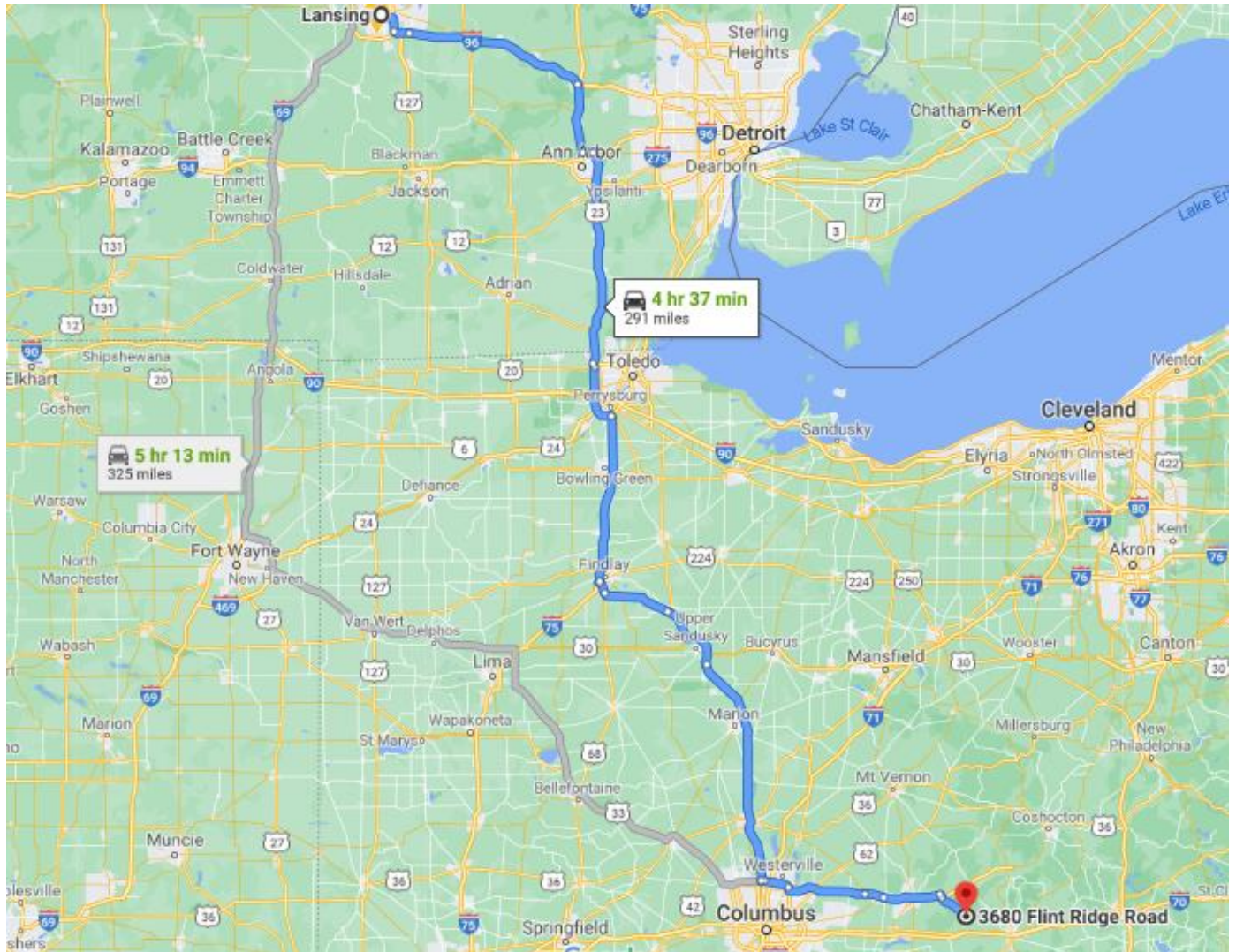
Equipment- bring bucket, digging tools and rock breaking tools.

Face shield or safety glasses recommended

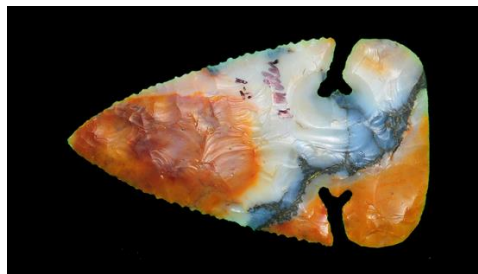
Questions Call or Email – Carl Mennare Field Trip Coordinator

Ph.517-599-1882 or cmenn@yahoo.com

Central Michigan Lapidary and Mineral Society



<http://roymillerflintridge.com/NethersVideo.htm>



This is an example of what his flint look like after it has been worked a little (or a lot). They are open all year. There is a small fee involved.

<https://sciencefestival.msu.edu/>

The poster features a vibrant, abstract background with a large, glowing pink and purple nebula-like shape on the left and a dark blue, grid-like pattern on the right. A small astronaut figure is visible in the lower right corner. The text is arranged in a clean, modern layout.

MICHIGAN STATE UNIVERSITY
SCIENCE FESTIVAL
APRIL 1-30, 2021

200+ VIRTUAL PRESENTATIONS ALL EVENTS FREE

- Talks with global experts
- Experiment-along activities
- Demonstrations
- Virtual tours
- Citizen science activities
- And so much more!

Visit the virtual Expo Days on 3 Saturdays in April
April 3, 10, and 17 (register for free on the MSU Science Festival website)

MSU Sc Fe

SCIENCEFESTIVAL.MSU.EDU

All events that are a part of the MSU Science Festival are FREE!

The 2021 MSU Science Festival will be virtual with limited explore on your own activities. Even though it will be virtual our presenters are ready to dazzle, delight, educate, and inform, reaching beyond science to include technology, engineering, arts, and mathematics (STEAM) and the important role they play shaping our future and everyday lives.

There's always something for everyone!

Whether you are part of our continuing or ever-expanding audience, the MSU SciFest Team is proud to have you along on our journey.

May the wonders of STEAM spark curiosity and inspire your imagination. -MSU SciFest Team

CLUB NEWS

Newsletter: If you have and club news or information you would like to pass along to the group, or any travel photos or trip notes you would like to share, please email Chuck Taricska at chuck_taricska@yahoo.com and he will make a note in the Newsletter.

Mineral Resource of the Month: Silver

By Florence C. Katrivanos, a mineral commodity specialist for the U.S. Geological Survey, compiled the following information on silver, an ancient metal with many modern applications.



This early-third-century-B.C. silver coin depicts Alexander III of Macedon, better known as Alexander the Great. The Macedonians also used silver medicinally, to treat battle wounds. Credit: The British Museum.

Silver, one of the eight precious or noble metals, has been used extensively throughout recorded history for various medical purposes, ornaments and utensils, and for its intrinsic value as the basis for trade and monetary systems. Silver has played a significant role in world history, financing a Greek victory over the Persians in 480 B.C., helping Spain become a world power in the 16th and 17th centuries, and helping fund the Union forces during the U.S. Civil War, to give a few examples.

Silver occurs as a native metal; in sulfide ores of copper, lead and zinc; and sometimes with bismuth and antimony. Silver is always present in ores containing gold. The Silver Institute estimated that, in 2013, about 29 percent of global mined silver came from silver ores, 38 percent came from lead-zinc ores, 20 percent came from copper ores and 13 percent came from gold ores.

Silver's properties include its ability to endure extreme temperatures, its high reflectance of light, its thermal and electrical conductivity (the highest of all metals), and its strength, malleability and ductility. Demand for silver arises from three areas: industrial applications (in electronics, brazing alloys and solders, photography and other uses), investment (including coins and bars), and silver jewelry and decor (including silverware).

Silver-halide X-rays were long the standard, but are now being replaced by digital imaging technology. Since 2000, demand for silver in photographic applications has also declined owing to the use of digital photography. In 2013, uses in electronics accounted for 42 percent of U.S. silver consumption; coins and metals for 35 percent; photography for 13 percent; jewelry and silverware for 7 percent; and other uses for 3 percent.

Silver is also used in solar power generation: 90 percent of crystalline silicon photovoltaic solar cells use silver paste. On windows, a transparent layer of silver reflects up to 95 percent of sunlight, saving energy. In water purification, use of silver eliminates the need for corrosive chlorine.

For more information on silver and other mineral resources, visit:

<http://minerals.usgs.gov/minerals>.

More Online Geo Resources:

American Institute of Professional Geologist – Michigan Section – <http://mi.aipg.org/newsletters.htm>

Eastern Section AAPG - <https://www.esaapg.org/>

EGLLE Calendar of Events - https://www.michigan.gov/egle/0,9429,7-135-3308_3333---,00.html

Flint Rock and Gem - <https://flintrockandgem.org/events>

Michigan Association of Environmental Professionals - <https://www.maep.org/>

Michigan Basin Geological Society – www.mbgs.org

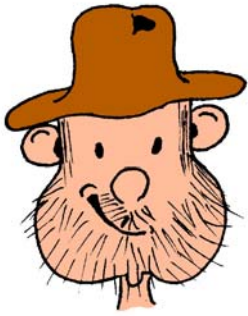
Michigan Clean Water Corps - <https://micorps.net/about/>

Michigan Mineralogical Society - <https://www.michmin.org/>

Mid-Michigan Rock Club - <http://www.midmichrockclub.com/?Page=1>

Midwest Mineralogical and Lapidary Society - <http://www.mmls.us/>

Society of Petroleum Engineers - <https://www.spe.org/events/calendar/>



DIAMOND DAN'S

"ONLINE

MINERAL ACADEMY"

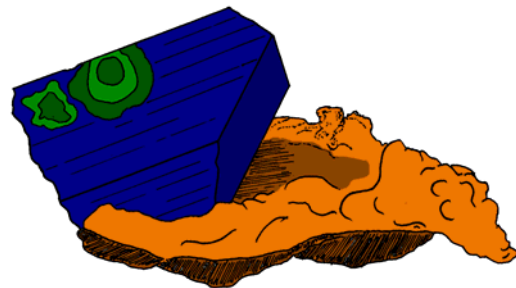
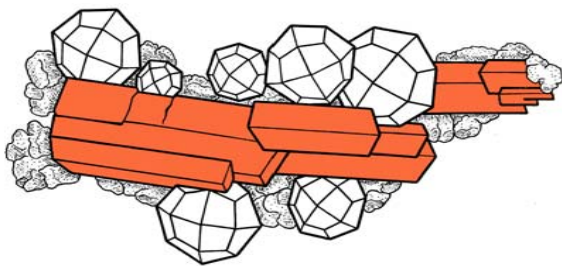
You will be doing a lot of schooling at home and online this year.

When you need a break from Math and Social Studies, check out Diamond Dan on YouTube for some fun videos about minerals, mineralogy and mineral collecting.

On YouTube, search for

MINI MINERS WITH DIAMOND DAN

Every couple weeks we'll have a new video for you. They will have tips for successful collecting, fun mineral facts, mineral uses, mineral books and magazines, and much, much more.



"Mini Miners with Diamond Dan" is **LIVE**. Check out the videos. And build yourself a great mineral collection!

**Credit to “Diamond Dan Publications” and the Diamond Dan website,
www.diamonddanpublications.net.** Content sourced from the Mini Miners Monthly publication.

UPCOMING SHOWS

May 15-16: NORTH OLMSTED, OH Parma Lapidary Club Annual Show. 11-5 each day. Soccer Sports Plex, 3515 Lorain, North Olmsted, OH 44070.
parmalapidaryclub@gmail.com; www.parmalapidary.com

CMLMS MINUTES

No meetings conducted.