

CMLMS
P.O. Box 24202
Lansing, Michigan 48909

**TIME VALUE
FIRST CLASS**

Rockhound News—September 2024

Official publication of the
**Central Michigan Lapidary and
Mineral Society**
Affiliated with MWF and AFMS

**Welcome Back- Show
and Tell!!**



Rockhound News

This bulletin is the official publication of the Central Michigan Lapidary and Mineral Society of greater Lansing, Michigan. It is published each month except July and August.

The Central Michigan Lapidary and Mineral Society is a non-profit organization, meeting to promote interest and increased knowledge in the fields of mineralogy, geology, paleontology and the lapidary arts. It was organized in May 1957 and celebrated its 50th Anniversary in 2007.

Meeting place: Masonic Center, 2175 Hamilton Street, Okemos, MI

Regular meeting date: Third Thursday, except July and August

Meeting time: 7:00 p.m., doors are open at 6:30 p.m.

Annual Dues: Adults \$10.00; Families \$15.00; Students under 18 \$2.00

Board meetings: First Thursday, except July and August; 6:00 p.m., Okemos Library

OFFICERS 2024

President	Nate Krupp	517-285-5503 nathan.krupp1@gmail.com
Vice-President	VACANT	
Recording Secretary	Jessica Clark	517-242-0554 clark.jess.leigh@gmail.com
Corresponding Secretary	Theresa Hubbard	517-203-9620 thrshubbard@yahoo.com
Treasurer	Fawn Dunbar	517-488-1992 fawn.l.dunbar@gmail.com
1 Year Director	Ruth Lehner	517-643-4406 geacie48@gmail.com
2 Year Director	Mattie Newman	616-590-9023 mattienewmanhelms@gmail.com
3 Year Director	Brian Miller	
Roster Secretary	Robin J. Smith	517-290-4891 rsmith@radssmith.com
Liaison Officer	Carl Mennare	517-599-1882 cmenn@yahoo.com
Past President	Sue Casler	517-582-2466 casler5copper@gmail.com

COMMITTEE CHAIRS 2024

Membership	Mattie Newman	616-590-9023 mattienewmanhelms@gmail.com
Field Trips	Carl Mennare	517-599-1882 cmenn@yahoo.com
Publications	Chuck Taricska	517-331-1737 chuck_taricska@yahoo.com
Display	VACANT	
Education and Outreach	Theresa Hubbard	517-203-9620 thrshubbard@yahoo.com
Library	Jessica Clark	517-242-0554 clark.jess.leigh@gmail.com
Finance	Milt Gere	517-669-8116 miltgere@aol.com
Show	Robin J. Smith	517-290-4891 rsmith@radssmith.com
Dealers and Demonstrators	Ruth Lehner	517-643-4406 geacie48@gmail.com
Web Master	Lyle Laylin	517-485-7908 lyle18@gmail.com

Permanent Mailing Address

CMLMS

P.O. Box 24202

Lansing, Michigan 48909

Club Website: <http://www.michrocks.org>

Please check out the website and Newsletter of our Affiliated club:

Midwest Federation of

Mineralogical and Geological Societies, <http://www.mwfed.org/>

ROCKHOUND NEWS

NEXT MEETING: Thursday, Sept. 19, 2024 @ 7:00 pm
PROGRAM: Show and Tell – Your summer adventures
REFRESHMENTS: Members please bring snacks! BYOB

Location and Time: The CMLMS membership meeting will be held on Sept 19, 2024 at 7:00 p.m., at the **Masonic Center, 2175 Hamilton Street, beautiful downtown Okemos.**

Calendar for Fall 2024

Sept. 5, 2024 - Board meeting, 6:00 p.m Okemos Library

Sept 14, 2024 - Packing Trailer organize for Show- Laylin Barn- 10am

Sept 19, 2024 - Membership meeting, 7:00 p.m., Masonic Center

Oct. 3, 2024 - Board meeting, 6:00 p.m Okemos Library

****Oct. 10, 2024 – Early Membership meeting, 7:00 p.m., Masonic Center**

Nov. 7- Board meeting, 6:00 p.m Okemos Library

Nov. 21- Membership meeting, 7:00 p.m., Masonic Center

[Editor's note: the deadline for the newsletter is **Wed, 8pm.** after the board meeting.]

UPCOMING PROGRAMS

Welcome back CMLMS members and friends. It's September (already)! We hope everyone had an adventurous and enjoyable summer with opportunities for travel, exploring new places and of course rock collecting! We look forward to hearing everyone's stories from their summer adventures at our September club meeting. Bring any items you want to show off from this summer. We would love to hear any reports from anyone who went to Keweenaw Rock Week 2024.

CLUB NEWS:

Saturday Work Bee: Saturday Sept. 14- 9:30 am

It is get ready for Show time again. The trailer will be at the Barn on the weekend of the 14th, yes **THIS** weekend. It is to be unloaded and restocked with kids table and other show material. All members are invited to come, about 9:30ish, and help as many hands make light work. We break for a potluck lunch to get reacquainted and meet new members so bring your Lunchables and a beverage

Where you ask, at 1770 Sandhill Rd. about 1 mile south of the Okemos Rd I-96 interchange and then east to the last house on the north side before Dobie Rd

OFFICERS AND BOARD MEMBERS NEEDED!

Please take some time to consider volunteering to fill an officer or board position next year. We are a fun group! Haven't been ousted from the Okemos Library yet! If interested, please let one of the board members know. Remember, without a board and officers, our society will cease to exist.

The Following positions will be needed for 2025:

President - Be the public face of the CML&MS, responding to e-mail and phone calls, Chair the Board of Directors meetings and bring pertinent items before the Board. Obtain the annual Banquet speaker and help organize it.

Vice President- in charge of membership meeting programming, except the Banquet, and temporarily takes over the President's duties when needed.

Display Chair - Maintain the permanent display case, exhibiting on behalf of the Society at shows, notifying members of area shows and enlisting members to display at these functions, and the acquisition and care of display specimens belonging to the Society.

Outreach Committee: We are always in need of volunteers to help with school science fairs, talks and presentations at schools and other organizations, and educational opportunities. Contact Theresa Hubbard, thrshubbard@yahoo.com to lend a hand.

IT'S GET READY TIME AGAIN! SHOW OPENS IN 30 DAYS

GREETINGS! September is here; October 18th is coming soon and if we are going to have a successful **SHOW** we have work to do!

The Club Trailer will be at the Laylin's on September 14th. As usual we need to sort and repack the contents left from last year's Show, which have been left in the trailer all year and add the new material. If you have time to work during the week call Roger at 349-3249 to help get ready for Saturday.

On **Saturday, September 14**, weather permitting, alternate date in September to be determined, we will start around **9:30 am**. Again there is much material to be sorted, boxed, priced and moved to the trailer. **Please** bring any materials you may wish to add to the children's table this day as it creates unnecessary problems if brought to the Show. Remember we can always use washed stones for the PEBBLE POND!

We will work until the jobs are completed, with a break for a **picnic lunch**. Bring a dish to pass. Drinks and table service will be provided. Please come for the fellowship at the picnic even if you feel that you would be no help in sorting and pricing as other activities are planned. Since this job is an inexact science, you can help in many ways.

If you don't want to help in the trailer, you can sit on the back porch and make items for the kid's jewelry table, critters, rings and necklaces. The materials, tumbled stones, findings and glue guns are all available.

If we want to continue to have a show, members must step up and take part in the activities. Please plan to show up on September 14th and give the club your support. If you cannot make it Saturday please call 349-3249 and find another time to put in some support time. There are still lots of materials to go through at the Laylin's barn and you can go on a local field trip at the Barn.

Address: 1770 Sandhill Rd. about 1 mile south of the Okemos Rd I-96 interchange and then east to the last house on the north side before Dobie Rd

VOLUNTEERS NEEDED!

There will be sign-up sheets at the September and October meetings for the different types of show work. Please come prepared to be involved and sign up! **A reminder:** the Show Committee will be enforcing the rule that in order to have free admission to the show a member must put in at least 4 hours (two 2hr shifts) at some show duty, enter a display, or demonstrate a lapidary skill. Remember that the club hospitality-break area is intended for use by the dealers and actively working club.

Display Cases available:

Note from Roger Laylin:

Over the years we have been the recipient of displays from past members. We now have SIX that are suitable for display at the Show, also three that I have used at school science nights as well as a special one I made to show fluorescent material.

Considering my age (91) I would ask that some one or two of you to volunteer to Assist Theresa Hubbard and attend future science nights using what material is available or creating your own.

The Show displays are available to anyone wishing to help by setting them up, show space permitting.

I have THREE cases that I am willing to sell at a reasonable price, to any of you. I also have a 10 inch table saw that I would sell.

Also available to anyone interested is my collection of the Lapidary Journal magazines from 1970, plus a few earlier, till they changed to just jewelry. Wall space required is about 5ft x 5ft with 5 shelves.

REMEMBER, if you can lift your big specimen I can probably cut it for you.

Roger Laylin 517- 349 -3249

Geological Anomalies: Chalcedony Breccia in a Cinnabar Matrix and the Disappearance of Michigan's Geology Professor

By Steven Wade Veatch

Hidden among geological marvels at a mineral show was a cinnabar-bearing chalcedony breccia-specimen (Figure 1). The term "breccia" refers to a rock composed of angular fragments, while "chalcedony" describes a type of cryptocrystalline quartz. Adding "cinnabar" specifies the presence of mercury sulfide, which creates a distinctive red color.

This breccia specimen reveals the Earth's natural forces and is a reminder of the mysterious disappearing act of a professor. The specimen, a chalcedony breccia, embedded in a

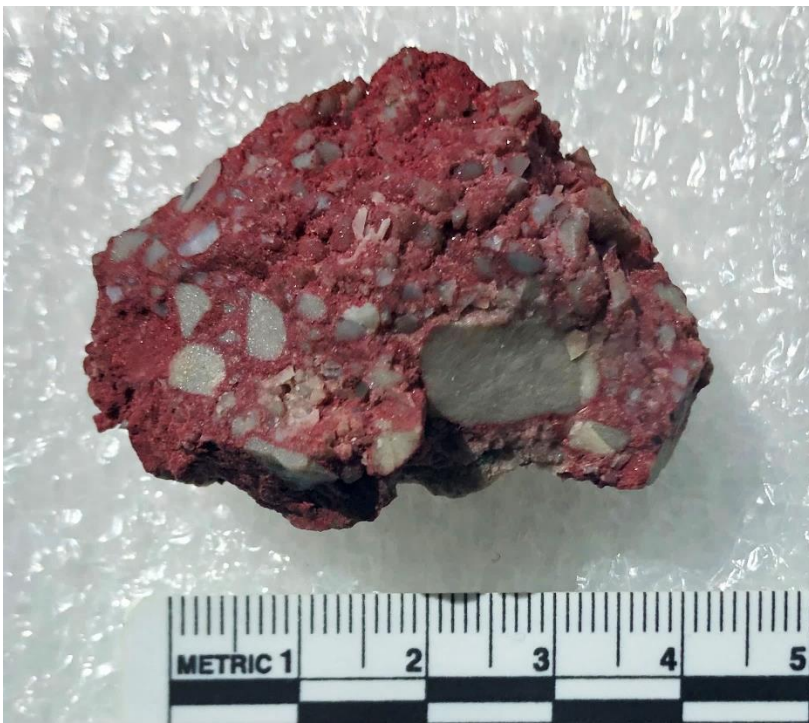


Figure 1. Chalcedony breccia in a cinnabar-matrix. While attending the Central Michigan Lapidary and Mineral Society rock show in 2023, the author noticed this specimen for sale by a vendor and purchased it for its interesting geological story and the sad tale about its original collector. From the collection of S. W. Veatch. Photo date 2024 by S. W. Veatch.

cinnabar matrix, unveils a story of geological upheaval. It is also a reminder of the personal upheaval of the man who collected it.

Professor M. W.

Harrington collected the cinnabar specimen from a streambed in Nappa County, California (Figures 2 and 3). At some point after he collected this sample, he disappeared. His wife and son relentlessly searched for him over many years. This article takes us on a journey to uncover the mysteries and wonders of this fascinating specimen and the

tragic tale of its collector.

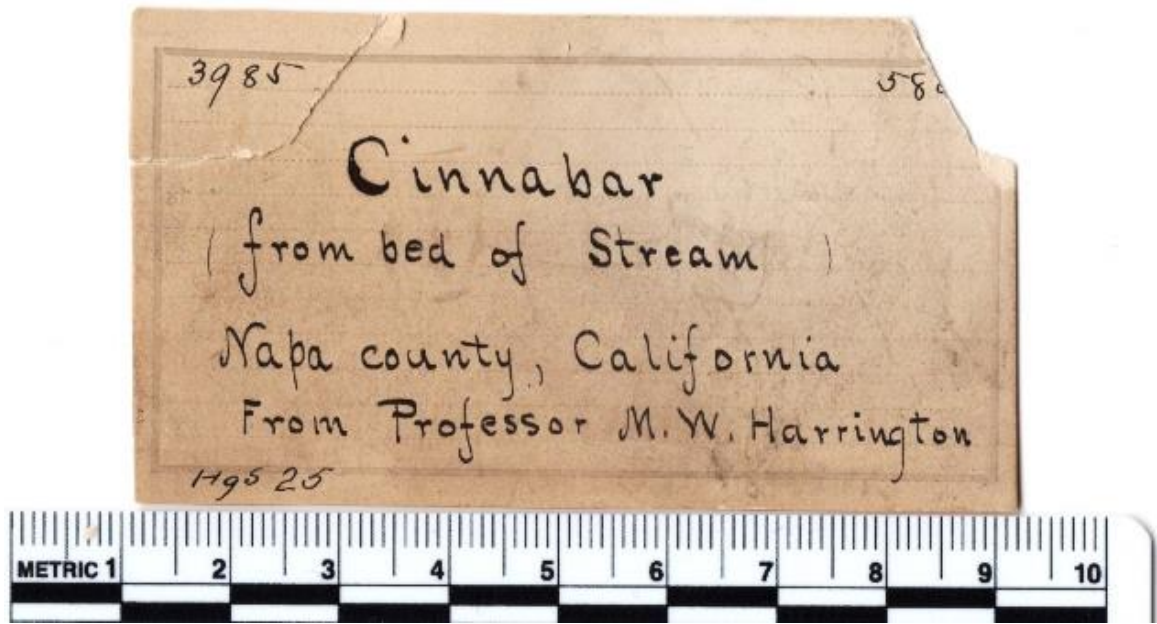


Figure 2. Label of the cinnabar-bearing chalcedony-breccia specimen collected by Professor Mark Walrod Harrington for the University of Michigan's Natural History Museum in Ann Arbor, Michigan. Photo date 2024 by S. W. Veatch.

The formation of the chalcedony breccia, which consists of chalcedony fragments embedded in a matrix of finer-grained, granular cinnabar, results from complex geological processes. These types of breccias usually develop in areas of intense tectonic activity or volcanic eruptions, where rocks break apart and then fuse back together.

The distinctive feature of this specimen is cinnabar, a vibrant red mineral consisting of mercury sulfide. Cinnabar typically is found in veins associated with volcanic activity and alkaline hot springs (Chesterman, 1990). It's the primary ore used to refine elemental mercury and has historically been used to create vibrant red pigments like vermilion.

Geological thought suggests that the formation of this chalcedony breccia within its cinnabar matrix likely occurred during periods of volcanic activity and low temperature hydrothermal circulation. The fracturing of the pre-existing chalcedony, possibly because of volcanic eruptions or tectonic movements, provided the initial substrate for the deposition of chalcedony fragments. The introduction of a cinnabar-rich solution through subsequent hydrothermal processes led to the cementation of the breccia, resulting in the creation of the intricate mosaic we currently observe.

From a scientific standpoint, this specimen offers valuable information about past geological events and environmental conditions. Researchers can reconstruct part of the region's geological history by studying the composition and texture of the chalcedony breccia and its association with cinnabar. These investigations enhance our knowledge of volcanic processes, hydrothermal activity, and mineral-deposit formation.

The cinnabar- and chalcedony-breccia specimen discussed in this article was collected by Mark Walrod Harrington (1848–1926) for the University of Michigan's mineral collection. Harrington was born in the pleasing town of Sycamore, Illinois and he attended the University of Michigan. The grandeur of the historic buildings on campus captivated his eyes while the distant sound of student chatter filled the air. Graduating in 1868 with a bachelor's degree, he continued his studies, delving into the world of academia, as the aroma of old books and the sound of pages turning surrounded him. In 1871, he earned his master's degree, and his heart filled with a sense of accomplishment.

He then started his career as the assistant curator at the University's Museum of Natural Sciences in Ann Arbor, Michigan. The hushed whispers of students exploring the museum echoed in his ears. With each step, he felt the weight of knowledge and responsibility grow. Eventually, the university made him the professor of botany, zoology, and geology, and then gave him the honor of directing the esteemed Detroit Observatory, where at night the twinkling stars above filled him with awe and wonder (Mark Walrod Harrington, 1895-97, n.d.).

In 1874, he married Rose Martha Smith, a woman hailing from his Illinois hometown. Shortly after, they welcomed a son into their family. However, tragedy struck in 1876 when their young child passed away. Initially, Harrington had intended to take a year-long sabbatical in

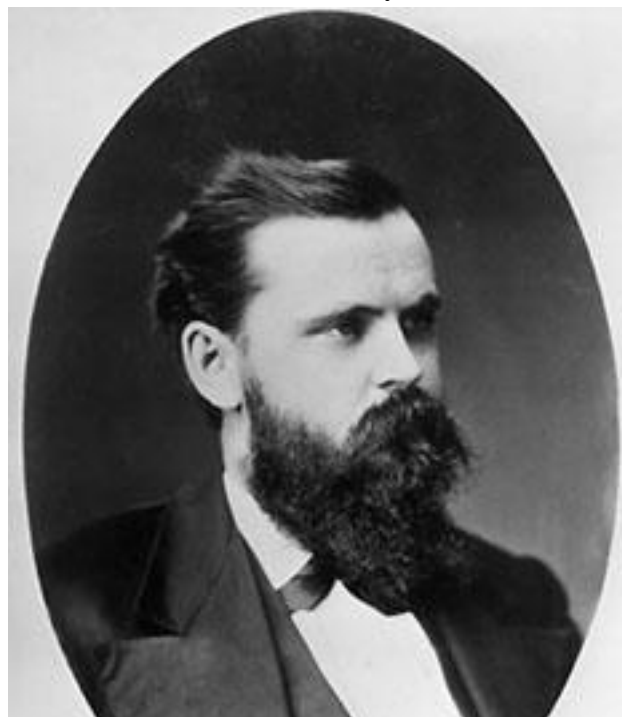


Figure 3. Photograph of Mark Walrod Harrington, during his tenure as Director of the Observatory at the University of Michigan, which he held from 1879–1891. A renowned American scientist in the late 19th century, he held the distinction of being the first civilian to head the United States Weather Bureau and had previously served as president of the University of Washington. He also held positions at the United States Weather Bureau before his disappearance in around 1899. Photographer unknown. Public domain.

Germany alone. However, because of the heart-wrenching loss, he and his wife embarked on the journey together. During their time in Europe, they immersed themselves in the German language, embraced a simple lifestyle, and grieved the loss of their son (Swanson, n.d.).

The president of the University of Michigan appointed Harrington to be the director of the Detroit Observatory in 1879. The Harringtons welcomed their second son, Mark Raymond, in 1882. The boy, like his father, had an insatiable curiosity. Harrington divided his time between the Observatory during the day and exploring the Ann Arbor countryside with his son in the evenings and on weekends, looking for plants, rocks, and arrowheads (Swanson, n.d.).

After leaving his university post, Harrington took on the position of the first civilian director of the United States Weather Bureau, which fell under the authority of the US Department of Agriculture (US Department of Commerce, n.d.). He only maintained this position a few years before problems with managing non-academic staff led to his dismissal. Next, he became the president of Washington Territorial University, but he faced issues again and had to resign. His leadership abilities seem to have been impacted by a newly emerging mental illness. After briefly returning to the Weather Bureau in a lower position, he resigned in 1899 (Swanson, n.d.). Later that year, on a summer evening, he told his wife and 17-year-old son that he was going out for dinner (Swanson, n.d.). He never came back (Swanson, n.d.). He vanished for almost a decade, a tragic event that overshadowed his academic accomplishments.

During the lost years, it appears that Harrington first spent his time working menial jobs. After that, he traveled to China where he tutored students in English. Unfortunately, he became ill during his time there, but he managed to save up enough money to sail back home. Upon his return, he landed in the American South after passing through the Panama Canal (Swanson, n.d.). He worked on sugar plantations for a while before deciding to travel west and stake a mining claim. Eventually, he found work as a lumberman. After these adventures, he returned to a sleazy Chicago flophouse and later made his way to New Jersey (Swanson, n.d.). Sadly, it was in New Jersey that his memory finally and completely failed him.

In 1907, alone and frightened in Newark, he sought shelter from the rain at a local police precinct. Upon seeing his condition, the authorities took him to a mental institution and admitted him under the name of “John Doe No. 8.”

Harrington’s whereabouts remained a mystery to his wife Rose and her son for the next

10 years. During his collection of Native American artifacts out west, Mark Raymond, Harrington's son, stumbled upon a newspaper report in 1908 about a peculiar admission to the Morris Plains Asylum for the Insane. He wasted no time contacting his mother, who soon found out that the man identified as John Doe No. 8 was her long-lost husband.

While at the asylum, the doctors determined that Harrington was suffering from severe mental illness. According to the University of Washington in Seattle, his wife claimed that, while he was investigating clouds over the campus during his brief tenure as president there, lightning struck him. The exact cause of his madness, however, remains unknown. Although there was some improvement in Harrington's mental state, he was never able to return to a normal life and refused to acknowledge his former name or personal history. As a result, he remained institutionalized for the rest of his life and passed away in the New Jersey State Mental Hospital at Morris Plains in 1926.

Harrington was a resolute scholar who delved into various fields including botany, astronomy, meteorology, and geology. He actively contributed to these disciplines through his studies and publications. And his knowledge extended beyond his vast scientific skills, as he was proficient in six different languages.

The chalcedony breccia, with its intricate patterns and vibrant hues, is a mesmerizing sight. As we gaze upon it, the contrasting colors of the delicate chalcedony captivate us against the vibrant red backdrop of cinnabar. The texture of the chalcedony feels smooth and cool to the touch, and the smell of earth and minerals fills the air. Professor Harrington's cinnabar is a testament to the timeless beauty and geological complexity of our planet, reminding us of the boundless wonders that lie beneath the surface. And this specimen recalls the sad end of a brilliant scientist.

References and selected reading

Chesterman, C. W. 1990. *The Audubon Society Field Guide to North American Rocks and Minerals*. New York: Knopf.

Mark Walrod Harrington, 1895-97 [Review of *Mark Walrod Harrington, 1895-97*]. University of Washington Libraries Special Collections. Retrieved April 12, 2024, from <https://www.lib.washington.edu/specialcollections/collections/exhibits/presidents/images/mark-walrod-harrington-1895-97/view>

Swanson, F. (n.d.). *Fault of His Stars* [Review of *Fault of His Stars*]. Bentley Historical Library. Retrieved April 2, 2024, from <https://bentley.umich.edu/news-events/magazine/the-fault-in-his-stars/>

The Seattle Post-intelligencer 22 August 1895 — Washington Digital Newspapers. Retrieved May 1, 2024, from <https://washingtondigitalnewspapers.org>.

US Department of Commerce, NOAA. "History of the National Weather Service" Retrieved May 11, 2024 from www.weather.gov.

UPCOMING SHOWS

Sept. 28-29: The Flint Rock and Gem Club, 56th Annual Gem-Jewelry-Mineral Show, Crossroads Village, 6140 Bray Rd, Flint, MI 48505. 10am to 5pm Both days

Sept. 13-15-: Tulip City ANNUAL SHOW - Fri 10-8, Sat 10-7, Sun 11-5
Soccer Stop—5 River Hills Dr, Holland, MI

Sept. 22-22: Livingston Gem & Mineral Society Annual Show, 10am – 6pm
Hartland Education Support, 9525 E. Highland Rd., Howell, MI
Contact: Ed Oller, (810) 241-8801; www.livingstongems.com

Oct. 5-6: Midwest Mineralogical & Lapidary Society Super Swap, 10am – 5pm
Wayne County Fairgrounds, 10871 Quirk Rd., Belleville, MI Contact: Bill Barr, (505) 803-4888;
wbarr@wmich.edu

Oct. 11-13: Michigan Mineralogical Society Annual Show, 9am – 6pm
Macomb Sports & Expo Center, Bldg P, 14500 E. 12 Mile Rd., Warren, MI
Contact: John Peters, (313) 255-7774; joopett13@hotmail.com; www.michmin.org/shows

Oct. 18-20: Three Rivers Gem & Mineral Society Annual Show, October 14, 10am – 6pm
Allen County Fairgrounds, 2726 Carroll Rd., Ft. Wayne, IN Contact: Bev Jenkins, (260) 639-0727; 3riversshow@gmail.com

CMLMS MINUTES

None were available to print