

CMLMS
P.O. Box 24202
Lansing, Michigan 48909

**TIME VALUE
FIRST CLASS**

Rockhound News— February 2021

Official publication of the
Central Michigan Lapidary and Mineral Society
Affiliated with MWF and AFMS



Rockhound News

This bulletin is the official publication of the Central Michigan Lapidary and Mineral Society of greater Lansing, Michigan. It is published each month except July and August.

The Central Michigan Lapidary and Mineral Society is a non-profit organization, meeting to promote interest and increased knowledge in the fields of mineralogy, geology, paleontology and the lapidary arts. It was organized in May 1957 and celebrated its 50th Anniversary in 2007.

Meeting place: Masonic Center, 2175 Hamilton Street, Okemos, MI

Regular meeting date: Third Thursday, except July and August

Meeting time: 7:00 p.m., doors are open at 6:30 p.m.

Annual Dues: Adults \$10.00; Families \$15.00; Students under 18 \$2.00

Board meetings: First Thursday, except July and August; 7:00 p.m., Okemos Library

OFFICERS 2020

President	Nate Krupp	517-626-1136 nathan.krupp1@gmail.com
Vice-President	Steve Smith	517-896-6048 radssmith@radssmith.com
Recording Secretary	Jake Chybowski	jcchybow@gmail.com
Corresponding Secretary	Theresa Hubbard	517-203-9620 thrshubbard@yahoo.com
Treasurer	Elaine Beane	517-272-9661 gebeane@comcast.net
1 Year Director	Jessica Clark	517-242-0554 clark.jess.leigh@gmail.com
2 Year Director	Lyle Laylin	517-488-7908 lyle18@gmail.com
3 Year Director	Sally Hedin	517-281-0575 sallyhedin@yahoo.com
Acting Roster Secretary	Elaine Beane (<i>pro tem</i>)	517-272-9661 gebeane@comcast.net
Liaison Officer	VACANT	
Past President	Sue Casler	517-582-2466 casler5copper@gmail.com

COMMITTEE CHAIRS 2020

Membership	Robin J. Smith	517-290-4891 rsmith@radssmith.com
Field Trips	Carl Mennare	517-599-1882 cmenn@yahoo.com
Publications	Chuck Taricska	517-331-1737 chuck_taricska@yahoo.com
Display	VACANT	
Education and Outreach	Theresa Hubbard	517-203-9620 thrshubbard@yahoo.com
Library	Jessica Clark	517-242-0554 clark.jess.leigh@gmail.com
Finance	Milt Gere	517-669-8116 miltgere@aol.com
Show	Robin J. Smith	517-290-4891 rsmith@radssmith.com
Show Co-Chair	Ernie Aughenbaugh	989-224-7619 esaslapidary@gmail.com
Web Master	Lyle Laylin	517-485-7908 lyle18@gmail.com

Permanent Mailing Address

CMLMS
P.O. Box 24202
Lansing, Michigan 48909

Club Website: <http://www.michrocks.org>

Affiliated With

Midwest Federation of Mineralogical and Geological Societies, <http://www.amfed.org/mwf/>

ROCKHOUND NEWS

NEXT MEETING: In person meetings cancelled!!

The CMLMS Board has voted to cancel membership meetings through March. We feel this is the best option in order to maintain the health of our club. The board will keep the club updated of any changes. Stay safe and healthy.

Well winter finally hit mid-Michigan! I didn't think I was going to have to pull the snowblower out this year but that last storm really hit us- I must have had at least 12 inches in the yard, along with some huge drifts along the house. I have seen some great pictures of the blue ice building up by the Mighty Mac, all that ice along the lakeshore might stir up nice stones for rockhounding in the spring. Hopefully we can have an outdoor meeting at a local park this spring when the weather gets warm. Also check your calendars for a possible field trip in April to a Flint Quarry in Ohio- details are posted below. Stay safe and I hope to see you soon. –Chuck T.

Calendar for Winter 2021

In person activities are cancelled.

[Editor's note: Please send any news or stories for the Newsletter to chuck_taricska@yahoo.com.]

Virtual Meeting available this month:

NASA Mars 2020 Rover Perseverance

MSU Department of Earth and Environmental Sciences,
EES Distinguish Speaker Series:

When: Friday February 26th, 12:30 PM, (virtual)

Presentation: Learn about the latest NASA mission to land on Mars. Rover scientific instruments and geology of landing site.

Presenter: Professor Michael Velbel from the MSU department of Earth and Environmental Sciences

Join Zoom Meeting: <https://zoom.us/j/95806644211>

Passcode: speaker

Website: <https://ees.natsci.msu.edu/news/nasa-mars-2020-rover-perseverance/>

Virtual Grand Canyon GeoFest:

Grand Canyon National Park and their partners at the University of New Mexico held a virtual Earth Science Week, from October 11-17, 2020. Comprehensive geology programs on the Grand Canyon were presented each day. This was a Facebook event, and videos of the talks are available online, and linked below. Day 2 is the only one available on YouTube, all the other presentations are only posted on Grand Canyon Park Facebook page. You can watch the video's without having a Facebook account.

The schedule of talks: (click on links to view video)

- Day 1 - [Park Welcome and GeoFest Introduction](#)
- Day 2 - [Three Sets of Rocks](#) (YouTube link: <https://youtu.be/ShZnSBensHA>)
- Day 3 – [Unconformities and Missing Time](#).
- Day 4 - [Fossils and Paleontology](#)
- Day 5 - [How Geologists Tell Time](#)
- Day 6 - [Grand Canyon Landscapes through Time](#) (how old is the Grand Canyon)

UPSeis: An educational site for budding seismologists

UPSeis (pronounced "up size") is a program created to teach young people (and not-so-young people) more about the planet we live on and how it works.

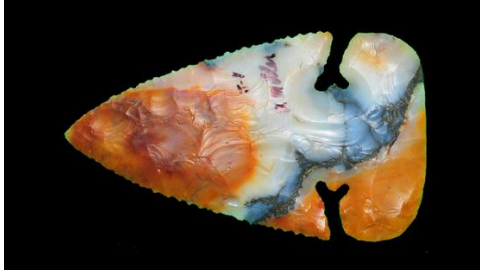
[Learn about Seismology!](#)

Field Trips!

Hello everyone,

I have been in contact with Roy Miller at Nether's Farm down in Ohio. They have a flint quarry that is open to the public. <http://roymillerflintridge.com/NethersVideo.htm>

3680 Flint Ridge Rd Hopewell, OH 43746



This is an example of what his flint look like after it has been worked a little (or a lot). They are open all year. There is a small fee involved. It is \$7.50 per person for the first 20 pounds collected and \$.50 a pound thereafter. \$7.50 for 20 pounds of this beautiful flint is a steal it seems to me. I am thinking April sometime on a Saturday. They are almost directly east of Columbus, OH, just a little over 4 hours away. Of course we will need to practice whatever social distancing and mask protocols are in vogue at the time of the trip. But, it is 4 hours South and should be a little bit warmer. – Email me for more information and if you are interested in going in April -Carl Mennare

If you have any ideas for field trips or want to get on the list for field trip notices, please contact Carl Mennare. Cell phone **517-599-1882** or cmenn@yahoo.com

NOTES FROM THE BOARD

The CMLMS Board has decided to push forward all memberships into next year. Your 2020 dues will cover your 2021 membership as well. This has been a difficult year, and since we have not been able to meet, the board has decided that the best option is extend membership into next year. Hopefully we will be able to resume meetings at the Masonic Center soon. Please let us know if you have ideas for future meeting topics or locations. Thank you

CLUB NEWS

Newsletter: If you have and club news or information you would like to pass along to the group, please email Chuck Taricska at chuck_taricska@yahoo.com and he will make a note in the Newsletter.

In memoriam

Wayne Fred Zittel

September 27, 1927 ~ February 7, 2021

Wayne Fred Zittel, 93, of Lansing, MI, passed away Sunday, February 7, 2021, at Ashley Care Center, Ashley, MI.

A Graveside Service will be held at Fulton Township Cemetery, Perrinton, MI on Monday, February 15, 2021 at 1:00 P.M. The service will be streamed on the Smith Family Funeral Home Facebook page.

Wayne was born in Fulton Township, Gratiot County, MI on September 27, 1927, one of the six children of Henrich "Henry" and Hannah (Repphun) Zittel. He graduated from Fulton High School. Wayne proudly served his country in the United States Navy immediately following WWII.

Wayne was a gentle man who enjoyed collecting many things. Among his favorite things were his gems and minerals. He was the President of the CML&MS (Central Michigan Lapidary and Mineral Society) for several years. He lived most of his life in Lansing. He was a Data Entry Specialist for the State of Michigan Health Department. After retiring, he managed the McDonald's near his home. In his younger years, he enjoyed couples' competitive skating and won many trophies.

Wayne is survived by his sister Lena Ely and many nieces, nephews, family and friends. He was preceded in death by his parents, sisters: Lillian Pitts, Mary Selig, and Edna Vaughn; and brother John Zittel.

Donations may be made to the Central Michigan Lapidary and Mineral Society in memory of Wayne - P.O. Box 24202, Lansing, MI 48909. Online condolences can be made at www.smithfamilyfuneralhomes.com



Mineral Resource of the Month: Garnet

By Kenneth C. Curry, USGS mineral commodity specialist



Garnet Schist

Geologic Occurrence

Garnet is the general name given to a group of complex silicate minerals, all with isometric crystal structure and similar properties and chemical composition. The most common garnet minerals are classified into three groups: the aluminum-garnet group, the chromium-garnet group and the iron-garnet group. Worldwide, garnet resources are large and occur in a wide variety of rocks, principally in metamorphic rocks such as gneisses and schists. Garnet also occurs in veins, contact metamorphic rocks, metamorphosed crystalline limestones, pegmatites and serpentinites. In addition, alluvial garnet sands are associated with heavy-mineral sand and gravel deposits in many parts of the world.

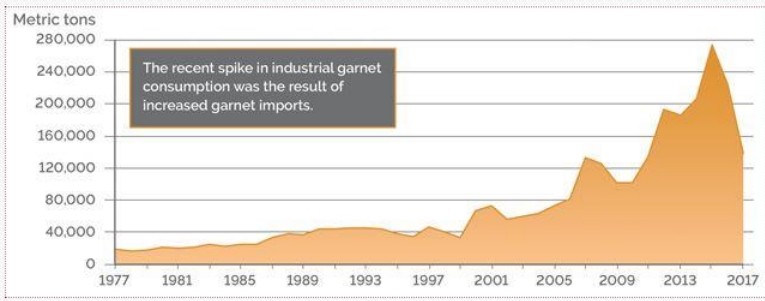
Commercial Usage

- Garnet that exhibits good clarity, color and size is used as a gemstone. Garnet that does not meet gem-quality standards is used for industrial applications. Garnet has many industrial applications because of its angular fractures, relatively high hardness and specific gravity, chemical inertness, nontoxicity, lack of associated crystalline silica, and ability to be recycled. The primary applications include use in waterjet cutting, abrasive blasting media, water filtration and abrasive powders. A few of the domestic industries that consume garnet include aircraft and motor vehicle manufacturing and ceramics and glass production.

Fun Facts

- Although garnet crystals most commonly occur with a reddish hue, garnets also can occur in many other colors, including blue, brown, green, orange, purple and yellow.
- Industrial garnet has a high enough hardness to cut through many materials, such as metals, at extremely high speeds. Industrial garnet is considered the industry standard abrasive in waterjet cutting.

U.S. Consumption



2017 World Production



More Online Geo Resources:

American Institute of Professional Geologist – Michigan Section – <http://mi.aipg.org/newsletters.htm>

Eastern Section AAPG - <https://www.esaapg.org/>

EGLE Calendar of Events - https://www.michigan.gov/egle/0,9429,7-135-3308_3333---,00.html

Flint Rock and Gem - <https://flintrockandgem.org/events>

Michigan Association of Environmental Professionals - <https://www.maep.org/>

Michigan Basin Geological Society – www.mbgs.org

Michigan Clean Water Corps - <https://micorps.net/about/>

Michigan Mineralogical Society - <https://www.michmin.org/>

Mid-Michigan Rock Club - <http://www.midmichrockclub.com/?Page=1>

Midwest Mineralogical and Lapidary Society - <http://www.mmls.us/>

Society of Petroleum Engineers - <https://www.spe.org/events/calendar/>

UPCOMING SHOWS

Feb 27-28: LIVONIA, MI The Roamin Club Auction. Sat & Sun. Schoolcraft Community College, 18600 Haggerty Rd., Livonia. Contact: Todd Gall, (248) 345-0676

March 13-14: WEST BEND, WI Kettle Moraine Geological Society Annual Show. Sat 10-5; Sun 10-4. Washington County Fairpark & Convention Center, 3000 Highway PV, West Bend. Contact: John Rettler, (262) 617-0022; johnrettler@gmail.com

CMLMS MINUTES

No meetings conducted.